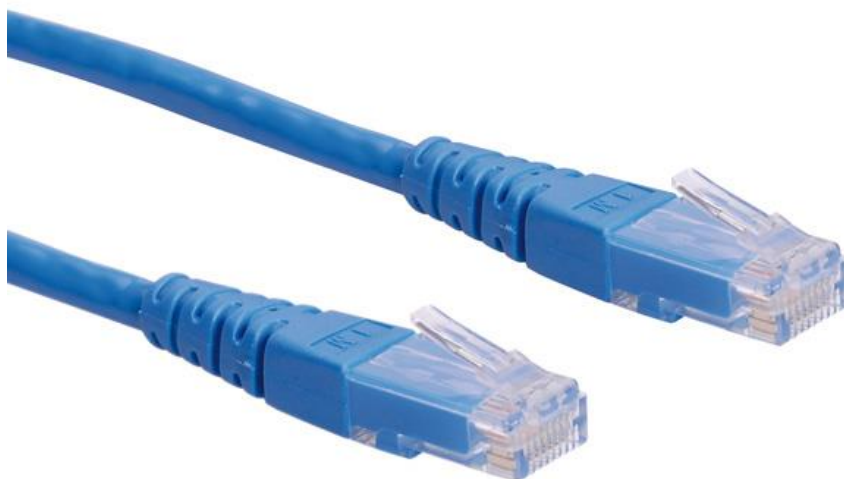




Datenblatt - Fiche technique - Data sheet

**21.15.1514**

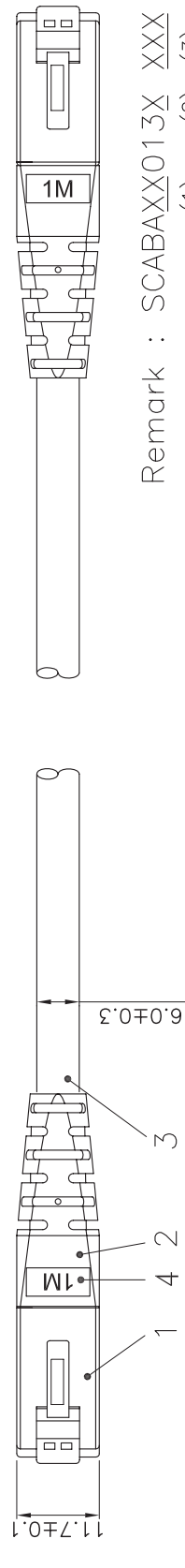
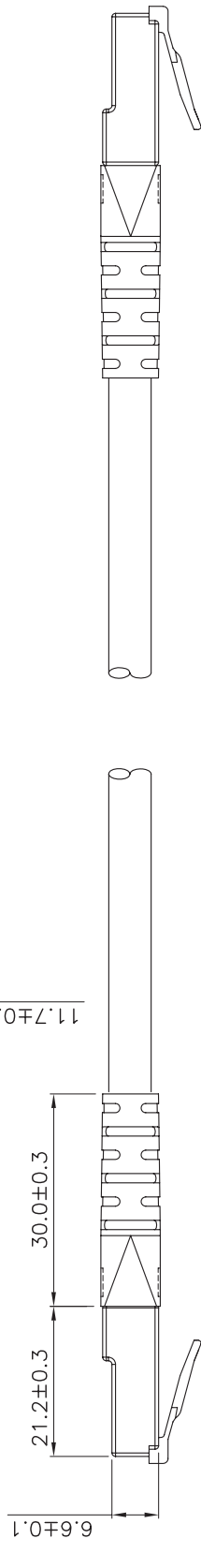
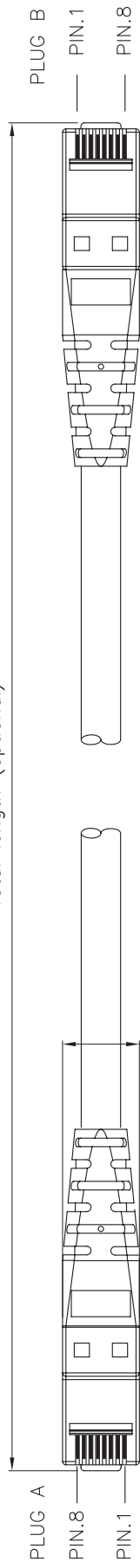


ROLINE UTP-Patchkabel Kat.6, blau, 0,3 m

Cordon ROLINE Cat.6 UTP, bleu, 0,3 m

ROLINE UTP Patch Cord, Cat.6, blue, 0.3 m

Total length (optional)



Remark : SCABAXX013X XXX XE1201  
 (1) (2) (3) (4)

- (1) XX : Jacket Color  
 01=Black(RAL9011), 02=Gray(RAL7035), 03=Red(RAL3031)  
 05=White(RAL9010), 06=Yellow(RAL1021), 07=Blue(RAL5015)  
 08=Green(RAL6029), 09=Orange(RAL2003), 10=Purple(RAL4005)  
 11=Pink(RAL4003)
- (2) X : Wiring  
 1=T568A, 2=T568B, 3=T568A & T568B combination
- (3) XXX : Length
- (4) Length Unit : 1=cm, 2=meter, 3=feet.  
 (3)(4) : 0501=0.5meter(50cm), 0012=1meter, 0102=10meter  
 0033=3feet, 0103=10feet

Specification :

- Material :
- 1. RJ45 Plug : (P/N : PU8850)  
 1-1. Housing : Polycarbonate, UL 94V-2, Transparent color.  
 1-2. Contact material : Phosphor Bronze with 50-60 micro-inch Nickel plated.  
 1-3. Contact finished : Min. 50 micro-inch Gold plated.
- 2. Narrow PVC Molded.
- 3. Cable : UTP UnShielded and Twisted,  
 4 pair Stranded wire UL material approved.  
 24 AWG conductor and PVC jacket.
- 4. length mark(latch side) : 0.3M,0.5M,0.75M,1M,1.5M,2M,3M,5M,7M,7.5M,  
 10M,15M,20M,25M,30M.
- 5. Print : roline UTP PATCH CABLE 24AWG 4PR EIA/TIA-568B.2-1  
 CAT.6 XXXXXXX-X

DRAWING 17.MAR.2009 Connie		DRAWING NO. 21.15.XXXX		ITEM NO.: 21.15.XXXX	
CHECK 17.MAR.2009 KLi	DRAWING NO. 21.15.XXXX(SAT)		DES.: C6 UTP Patch Cord		A1
APPROVAL 17.MAR.2009 Yty	DRAWING CLASSIFICATION		SHEET 1 OF 1		
SCALE 1/1 (A4) UNIT mm		DRAWING CLASSIFICATION		SHEET 1 OF 1	
GENERAL TOLERANCE OF DIMENSIONS X.XXX ±0.005 X.XX ±0.05 X.X ±0.1		DRAWING CLASSIFICATION		SHEET 1 OF 1	